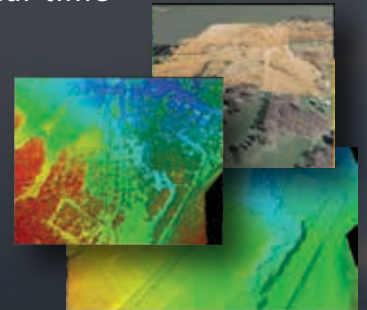


Transformational LiDAR Data Management and Streaming

A point streaming Web Service and SDK that provides real-time, on-line access to multiple LiDAR collections from a single unified database.

GvLF enables users to quickly retrieve large datasets and perform analysis solely on the relevant area of interest, while eliminating time-consuming manipulation of unnecessary information.

- Query for collections by name, date or geographic footprint, classification, or other attributes
- Stream the minimum amount of data required to accomplish a task
- Stream points to laptops, tablets, and android devices in the field in real-time
- Select points in vertical stacks, horizontal slices, or cubic volumes
- Scale data based on collection resolution, location, or classification
- Designed to run on your server or in the cloud
- Lossless data compression reduces storage and bandwidth costs by 4:1 to 50:1
- Each packet of streamlined data is measured in kilobytes rather than 100's of megabytes for an entire LAS file
- Enables clients to roam and zoom through datasets without having to download and read entire files; gets point data Just-In-Time (JIT Data)



GvLF is the culmination of more than a decade of LiDAR research and processing expertise.

www.pargovernment.com

Solutions Through Innovation

ISO 9001 Certified



esri

Partner Network
Silver

GvLF
Patent Pending

421 Ridge Street
Rome, NY 13440